

REMARKS:	ACCESSORIES:
1. THE CONTRACTOR SHALL BE RESPONSIBLE FOR PROVIDING ALL FITTINGS AND ACCESSORIES REQUIRED FOR A COMPLETE INSTALLATION. 2. THE N.C. VALUES LISTED ARE VALID FOR THE SCHEDULED AIRFLOW ONLY AND REPRESENT A MAXIMUM ACCEPTABLE VALUE. SUBSTITUTE EQUIPMENT SHALL HAVE N.C. VALUE EQUAL TO OR BELOW THE VALUE SCHEDULED. 3. PAINT INTERIOR OF VISIBLE RETURN DUCTS & PLENUMS BLACK.	1. PROVIDE FRAME FOR INSTALLATION IN RELEVANT CEILING TYPE. REFER TO ARCHITECTURAL RCP FOR CEILING TYPE.

DUCTWORK SCHEDULE

GENERAL NOTES:

1. DUCTWORK SHALL BE CONSTRUCTED AND INSTALLED PER SMACNA GUIDELINES.
2. RECTANGULAR DUCTWORK SHALL BE GALVANIZED SHEET METAL.
3. RECTANGULAR DUCT ELBOWS SHALL HAVE TURNING VANES.
4. ROUND DUCTWORK SHALL BE GALVANIZED SPIRAL SHEET METAL.
5. PROVIDE SEISMIC BRACING OF DUCTWORK AS REQUIRED BY LOCAL CODES.
6. SHEET METAL DUCTWORK GAGE SHALL BE SELECTED IN ACCORDANCE WITH SMACNA GUIDELINES.
7. DUCTWORK SHALL BE SEALED IN ACCORDANCE WITH SMACNA, AND THE CURRENT EDITION OF THE OEESC.
8. DUCT INSULATION MUST HAVE FLAME SPREAD LESS THAN 25 AND SMOKE-DEVELOPED INDEX OF NOT MORE THAN 50 WHEN TESTED IN ACCORDANCE WITH ASTM E84 OR UL 723.
9. INDOOR EXHAUST DUCTWORK SHALL BE INSULATED FROM THE PENETRATION OF THE BUILDING ENVELOPE TO 10 FT UPSTREAM OF A BACKDRAFT OF SHUTOFF DAMPER.
10. VALUES SCHEDULED BELOW ARE A MINIMUM AND SHALL BE SUPERSEDED BY MORE STRINGENT, CURRENTLY ADOPTED ENERGY OR MECHANICAL CODE REQUIREMENTS.

JACKET:

1. FACTORY APPLIED ALL SERVICE JACKETS (ASJ) SHALL BE FOIL SCRIM KRAFT (FSK). SEAL AT EXPOSED SEAMS/ EDGES/ CORNERS WITH FSK ADHESIVE TAPE.

Diagram illustrating the assembly of a square-to-round diffuser adapter or round neck inlet as scheduled. The assembly includes:

- SUPPORT STRAPS
- INSULATED FLEX DUCT (MAXIMUM 48")
- RIGID OR ADJUSTABLE SHEETMETAL ELBOW
- SECURE FLEX DUCT TO SHEETMETAL ELBOW WITH TAPE AND POSITIVE LOCKING STRAPS PER SPECIFICATIONS
- OPOSED BLADE DAMPER AS SCHEDULED
- SQUARE TO ROUND DIFFUSER ADAPTER OR ROUND NECK INLET AS SCHEDULED
- GWB CEILING
- SURFACE MOUNT CEILING DIFFUSER
- C.L.
- LAY-IN CEILING
- LAY-IN CEILING DIFFUSER

1 CEI
N.T.S.

[illegible]

**OBSIDIAN MIDDLE SCHOOL
MODERNIZATION**

REDMOND SCHOOL DISTRICT

BID SET

Title: OVERALL FLOOR PLAN

Date : 2026-01-30

Project No.	2E032
-------------	-------

Sheet No

M1.00

1 OVERALL MECHANICAL PLAN
1" = 20'-0" @ FULL SIZE

- A. VERIFY THE LOCATION OF THERMOSTATS AND SENSORS WITH THE ARCHITECT AND ENGINEER PRIOR TO INSTALLATION. INSTALL THERMOSTATS 48" ABOVE FINISHED FLOOR PER ADA REQUIREMENTS.
- B. PROVIDE AND INSTALL SEISMIC BRACING FOR DUCTWORK PER THE REQUIREMENTS OF THE CURRENTLY ADOPTED INTERNATIONAL BUILDING CODE.
- C. FLEXIBLE DUCTWORK BETWEEN BRANCH DUCTS AND GRILLES, REGISTERS OR DIFFUSERS SHALL BE LIMITED TO 5 FT. FLEXIBLE DUCT SHALL NOT BE USED IN PLACE OF ELBOWS.
- D. SEAL DUCT AND PIPE PENETRATIONS THROUGH FIRE RATED ASSEMBLIES WITH A UL-APPROVED FIRE STOP SYSTEM.
- E. MAINTAIN THE INTEGRITY OF DRAFTSTOPPING WHERE DUCTWORK AND PIPING PENETRATE DRAFTSTOPPING MATERIALS.
- F. PROVIDE ACCESS DOORS TO ALLOW SERVICE AND INSPECTION OF EQUIPMENT, VALVES, DAMPERS AND DEVICES INSTALLED IN INACCESSIBLE LOCATIONS. COORDINATE SUCH INSTALLATIONS WITH THE ARCHITECT AND ENGINEER.
- G. DIMENSIONAL DIMENSIONS INDICATE THE CLEAR WIDTH/HEIGHT AND HAVE NOT BEEN INCREASED TO ACCOMMODATE DUCT LINER. INSTALLED DUCT SHALL BE INCREASED TO ACCOMMODATE LINER THICKNESS WHERE LINER IS INDICATED IN THE DRAWINGS OR SPECIFICATIONS.

- A. LOCATIONS AND DIMENSIONS OF EXISTING FACILITIES IDENTIFIED ON THIS DRAWING ARE APPROXIMATE AND REPRESENT THE BEST AVAILABLE INFORMATION BASED ON A COMBINATION OF FIELD INVESTIGATIONS AND PHOTOGRAPHY AND RECORD DRAWINGS. VERIFY LOCATIONS AND DIMENSIONS AT THE TIME OF THE DESIGN. FIELD VERIFY LOCATIONS AND DIMENSIONS PRIOR TO AND DURING PERFORMANCE OF THE WORK. PROVIDE DEMOLITION WORK NECESSARY TO COMPLETE THE SCOPE OUTLINED IN THE CONSTRUCTION DOCUMENTS.
- B. EXISTING MECHANICAL EQUIPMENT, DUCTWORK, AND PIPING SHOWN AS REMOVED SHALL BE REMOVED. EXISTING VESTIBLE CEMENT FLOOR, CEILING, EQUIPMENT, DUCTWORK, AND PIPING SHOWN LIGHT SHALL REMAIN UNCHANGED.
- C. THE MECHANICAL CONTRACTOR SHALL COORDINATE SALVAGE OF REMOVED EQUIPMENT IN AND COORDINATION WITH THE OWNER. THE MECHANICAL CONTRACTOR SHALL DISPOSE OF REMOVED EQUIPMENT.
- D. COORDINATE UTILITY OUTAGES WITH THE GENERAL CONTRACTOR THROUGHOUT THE DURATION OF CONSTRUCTION. NOTIFICATION MUST BE GIVEN TO THE OWNER AT LEAST A WEEK PRIOR TO ANY PLANNED OUTAGES.
- E. COORDINATE WITH THE GENERAL CONTRACTOR FOR DEMOLITION AND REPAIR OF ROOF, WALLS, CEILING, OF FLOOR PENETRATIONS ASSOCIATED WITH THE DEMOLITION OF THE EXISTING MECHANICAL SYSTEMS.

- 1 DEMO BACK TO MAIN DUCT. COVER AND SEAL OPENING.
- 2 SALVAGE DIFFUSERS DURING DEMOLITION PHASE. RECONNECT TO EXISTING DUCTWORK DURING NEW CONSTRUCTION PHASE.
- 3 PROVIDE BALANCING DAMPER IN DROP FROM MAIN DUCT TO DIFFUSER.

[illegible]

BID SET

REDMOND SCHOOL DISTRICT

MODERNIZATION

OBSEDIAN MIDDLE SCHOOL

g Title: 192 - BOYS RESTROOM

Date : 2026-01-30

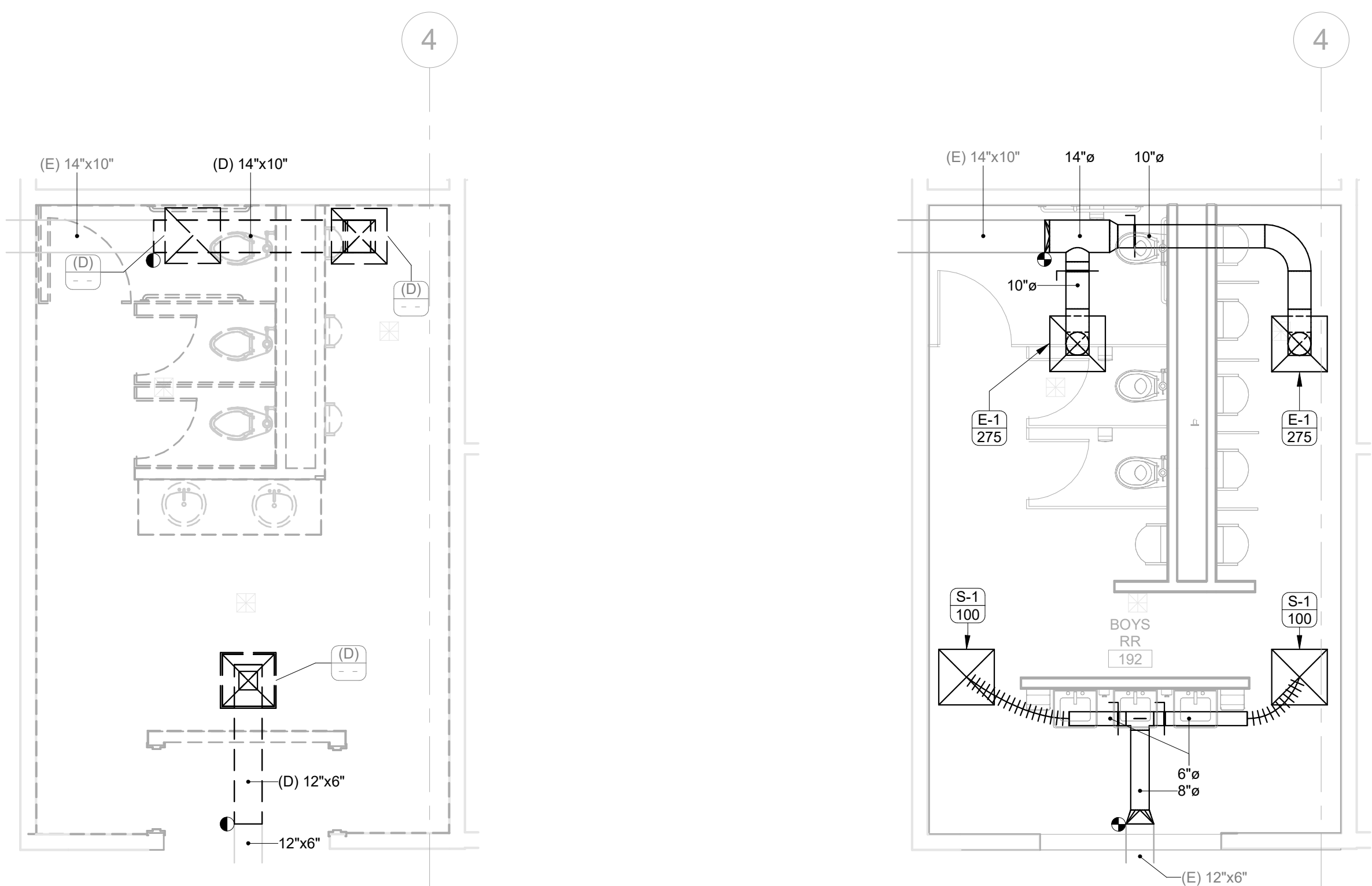
Revised :	Project No.
	25032

Sheet No

M1.02

- A. VERIFY THE LOCATION OF THERMOSTATS AND SENSORS WITH THE ARCHITECT AND ENGINEER PRIOR TO INSTALLATION. INSTALL THERMOSTATS 48" ABOVE FINISHED FLOOR PER ADA REQUIREMENTS.
- B. PROVIDE AND INSTALL SEISMIC BRACING FOR DUCTWORK PER THE REQUIREMENTS OF THE CURRENTLY ADOPTED INTERNATIONAL BUILDING CODE.
- C. FLEXIBLE DUCTWORK BETWEEN BRANCH DUCTS AND GRILLES, REGISTERS OR DIFFUSERS SHALL BE LIMITED TO 5 FT. FLEXIBLE DUCT SHALL NOT BE USED IN PLACE OF ELBOWS.
- D. SEAL DUCT AND PIPE PENETRATIONS THROUGH FIRE RATED ASSEMBLIES WITH A UL-APPROVED FIRE STOP SYSTEM.
- E. MECHANICAL DUCTWORK AND DRAFTSTOPPING WHERE DUCTWORK AND PIPING PENETRATE DRAFTSTOPPING MATERIALS.
- F. PROVIDE ACCESS DOORS TO ALLOW SERVICE AND INSPECTION OF EQUIPMENT, VALVES, DAMPERS AND DEVICES INSTALLED IN INACCESSIBLE LOCATIONS. COORDINATE SUCH INSTALLATIONS WITH THE ARCHITECT AND ENGINEER.
- G. DUCTWORK DIMENSIONS INDICATE THE CLEAR WIDTH/HEIGHT AND HAVE NOT BEEN INCREASED TO ACCOMMODATE DUCT LINER. INSTALLED DUCT SHALL BE INCREASED TO ACCOMMODATE LINER THICKNESS WHERE LINER IS INDICATED IN THE DRAWINGS OR SPECIFICATIONS.

- A. LOCATIONS AND DIMENSIONS OF EXISTING FACILITIES IDENTIFIED ON THIS DRAWING ARE APPROXIMATE AND REPRESENT THE BEST AVAILABLE INFORMATION BASED ON A COMBINATION OF FIELD INVESTIGATIONS AND VARIOUS DESIGN AND RECORD DRAWINGS. IT IS THE TIME OF THE DEMOLITION AND VERY CLOSELY COORDINATE THE DIMENSIONS PRIOR TO THE PERFORMANCE OF THE WORK. PROVIDE DEMOLITION WORK NECESSARY TO COMPLETE THE SCOPE OUTLINED IN THE CONSTRUCTION DOCUMENTS.
- B. EXISTING MECHANICAL EQUIPMENT, DUCTWORK, AND PIPING SHOWN AS VARIOUS DASHED SYMBOLS WILL BE DEMOLISHED. EXISTING MECHANICAL EQUIPMENT, DUCTWORK, AND PIPING SHOWN LIGHT SHALL REMAIN UNCHANGED.
- C. THE MECHANICAL CONTRACTOR SHALL COORDINATE SALVAGE OF REMOVED EQUIPMENT IN GOOD CONDITION WITH THE OWNER. THE MECHANICAL CONTRACTOR SHALL COORDINATE WITH THE ELECTRICAL EQUIPMENT.
- D. COORDINATE UTILITY OUTAGES WITH THE GENERAL CONTRACTOR THROUGHOUT THE DURATION OF CONSTRUCTION. NOTIFICATION MUST BE GIVEN TO THE OWNER AT LEAST A WEEK PRIOR TO ANY PLANNED OUTAGES.
- E. COORDINATE WITH THE GENERAL CONTRACTOR FOR MATCH AND REPAIR ROOF, FLOOR, CEILING, OR FLOOR PENETRATIONS ASSOCIATED WITH THE DEMOLITION OF THE EXISTING MECHANICAL SYSTEMS.



2 MECHANICAL PLAN - 192 BOYS RESTROOM
1/4" = 1'-0" @ FULL SIZE

[illegible]

BID SET

REDMOND SCHOOL DISTRICT

MODERNIZATION

OBSEDIAN MIDDLE SCHOOL

Drawing Title: 193 - GIRLS RESTROOM	
Date :	2026-01-30
Revised :	Project No. 25033

Sheet No.
M1.03

© 2025 SĀJ Architecture, LLC

- A. VERIFY THE LOCATION OF THERMOSTATS AND SENSORS WITH THE ARCHITECT AND ENGINEER PRIOR TO INSTALLATION. INSTALL THERMOSTATS 48" ABOVE FINISHED FLOOR PER ADA REQUIREMENTS.
- B. PROVIDE AND INSTALL SEISMIC BRACING FOR DUCTWORK PER THE REQUIREMENTS OF THE CURRENTLY ADOPTED INTERNATIONAL BUILDING CODE.
- C. FLEXIBLE DUCTWORK BETWEEN BRANCH DUCTS AND GRILLES, REGISTERS OR DIFFUSERS SHALL BE LIMITED TO 5 FT. FLEXIBLE DUCT SHALL NOT BE USED IN PLACE OF ELBOWS.
- D. SEAL DUCT AND PIPE PENETRATIONS THROUGH FIRE RATED ASSEMBLIES WITH A UL-APPROVED FIRE STOP SYSTEM.
- E. MECHANICAL DUCTWORK AND DRAFTSTOPPING WHERE DUCTWORK AND PIPING PENETRATE DRAFTSTOPPING MATERIALS.
- F. PROVIDE ACCESS DOORS TO ALLOW SERVICE AND INSPECTION OF EQUIPMENT, VALVES, DAMPERS AND DEVICES INSTALLED IN INACCESSIBLE LOCATIONS. COORDINATE SUCH INSTALLATIONS WITH THE ARCHITECT AND ENGINEER.
- G. DUCTWORK DIMENSIONS INDICATE THE CLEAR WIDTH/HEIGHT AND HAVE NOT BEEN INCREASED TO ACCOMMODATE DUCT LINER. INSTALLED DUCT SHALL BE INCREASED TO ACCOMMODATE LINER THICKNESS WHERE LINER IS INDICATED IN THE DRAWINGS OR SPECIFICATIONS.

- A. LOCATIONS AND DIMENSIONS OF EXISTING FACILITIES IDENTIFIED ON THIS DRAWING ARE APPROXIMATE AND REPRESENT THE BEST AVAILABLE INFORMATION BASED ON A COMBINATION OF FIELD INVESTIGATIONS AND VARIOUS DESIGN AND RECORD DRAWINGS. IT IS THE TIME OF THE DEMOLITION AND VERY CLOSELY COORDINATE THE DIMENSIONS PRIOR TO THE PERFORMANCE OF THE WORK. PROVIDE DEMOLITION WORK NECESSARY TO COMPLETE THE SCOPE OUTLINED IN THE CONSTRUCTION DOCUMENTS.
- B. EXISTING MECHANICAL EQUIPMENT, DUCTWORK, AND PIPING SHOWN AS VARIOUS DASHED SYMBOLS SHALL BE DEMOLISHED. EXISTING MECHANICAL EQUIPMENT, DUCTWORK, AND PIPING SHOWN LIGHT SHALL REMAIN UNCHANGED.
- C. THE MECHANICAL CONTRACTOR SHALL COORDINATE SALVAGE OF REMOVED EQUIPMENT IN GOOD CONDITION WITH THE OWNER. THE MECHANICAL CONTRACTOR SHALL COORDINATE WITH THE ELECTRICAL EQUIPMENT.
- D. COORDINATE UTILITY OUTAGES WITH THE GENERAL CONTRACTOR THROUGHOUT THE DURATION OF CONSTRUCTION. NOTIFICATION MUST BE GIVEN TO THE OWNER AT LEAST A WEEK PRIOR TO ANY PLANNED OUTAGES.
- E. COORDINATE WITH THE GENERAL CONTRACTOR FOR MATCH AND REPAIR ROOF, FLOOR, CEILING, OR FLOOR PENETRATIONS ASSOCIATED WITH THE DEMOLITION OF THE EXISTING MECHANICAL SYSTEMS.

